



Art, Fashion & Photography Trip to LONDON!

When will
we go?

Tuesday 6th to
Thursday 8th October
2026 (NEXT year!)

(The week BEFORE the
Oct break)



Who can go?

Anyone currently in S4 or 5 who takes Art, Fashion and / or Photography!



What will we do?

- ▶ We will visit a range of exhibitions and **London sights**, as well as go on the **London eye** and go to a **West End Theatre Show**!
- ▶ The next few slides break down what we will do each day....



Where will we stay?

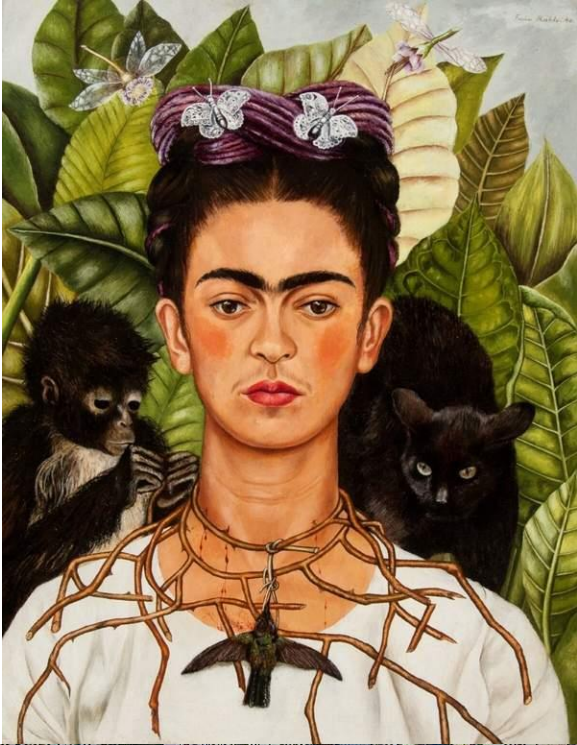
- The **Royal National Hotel** in Bloomsbury. Due to its central location, this hotel is often used for school trips by our trip provider NST and is close to the tube station at Russell Square.

Tuesday 6th Oct

- Arrive at Kings Cross approx 12 noon
- Have lunch at historic **CoalDrops yard**
- Visit Tate Britain for the **90s exhibition**
- Take a **London Eye flight**
- Have 2 course dinner at **Las Iguanas** on the southbank
- Walking tour of the sights along the **Southbank**



Wednesday 7th Oct.



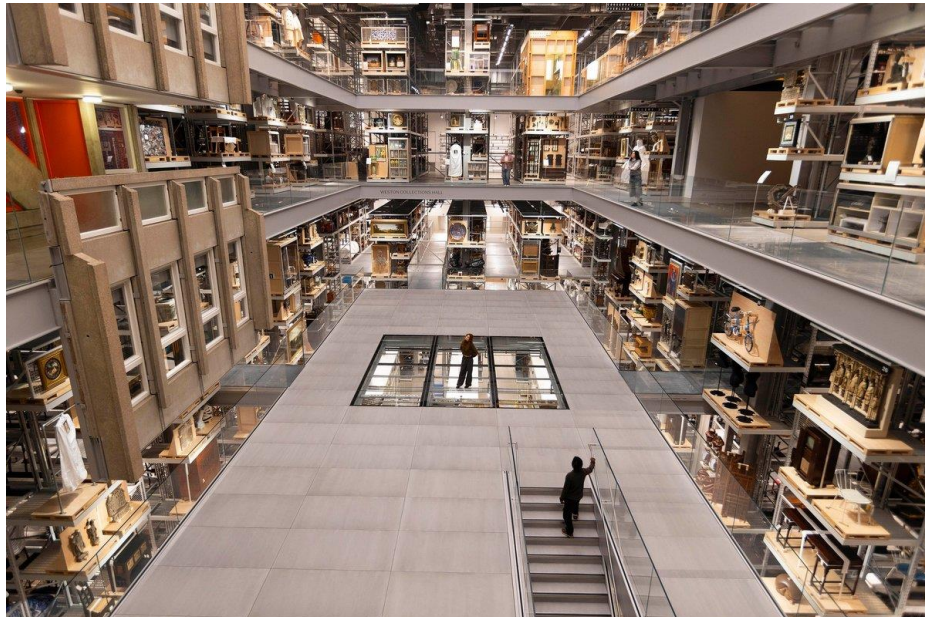
- Attend the **Frida Kahlo exhibition**
- Have lunch at food vendors near Tate modern
- Attend the **Tracey Emin exhibition**
- Visit the famous **Leake Street Graffiti tunnel**



- **Shopping** in Leicester square / Picadilly
- **Dinner** at Pizza Hut
- Attend **Theatre** show (to be voted on nearer time)



Thursday 8th Oct



Group splits in two to see EITHER the Light and Magic Photography exhibition at [Tate Modern](#) OR

Visit the [V&A East storehouse](#) to see the world famous Fashion Collection featuring designers such as Vivienne Westwood and Alexander McQueen.

After lunch both groups meet at Kings Cross to return to Edinburgh on the 2pm train arriving in Edinburgh at approx 6.30pm

What will it cost? £470 per person

What IS included?	What is NOT included?
<ul style="list-style-type: none">• Return train travel to and from Waverley Station (6th, 8th)	Lunch
<ul style="list-style-type: none">• 2 nights accommodation (6th,7th)	Spending money for personal souvenirs
<ul style="list-style-type: none">• 2 days hotel breakfasts (7th, 8th)	Tube fares for travel within London (this is capped at a daily limit of £8.90 for over 16s and £4.45 for under 16s)
<ul style="list-style-type: none">• 2 nights dinners in city restaurants (6th, 7th)	
<ul style="list-style-type: none">• Ticket to a West end show (7th)	
<ul style="list-style-type: none">• Flight on the London Eye (6th)	
<ul style="list-style-type: none">• Entry to 4 paid exhibitions (6th, 7th, 8th)	

I want to go! What do I do now?

- ▶ Write your name and the date on the sign up sheet on the Art base door by **Thus 28th Aug** at the latest.
- ▶ Mrs Graham will check numbers. We can take a **MAXIMUM OF 40 PUPILS** SO IT IS FIRST COME FIRST SERVED.
- ▶ Parents / carers must then pay a non refundable deposit of £100 by Fri 5th Sept to secure your place.
- ▶ If any deposits are not paid by then, those places will be offered to pupils on the waiting list.