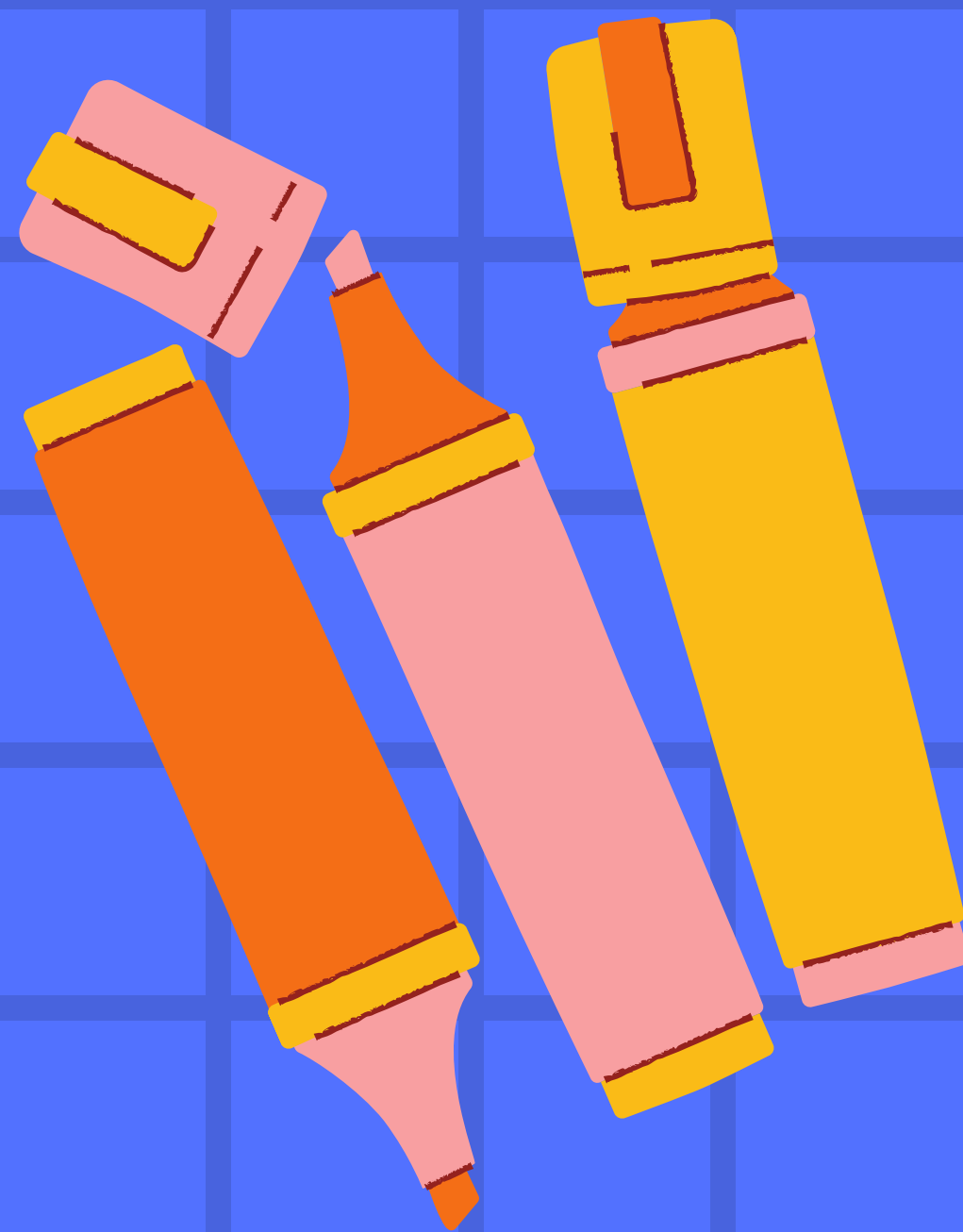
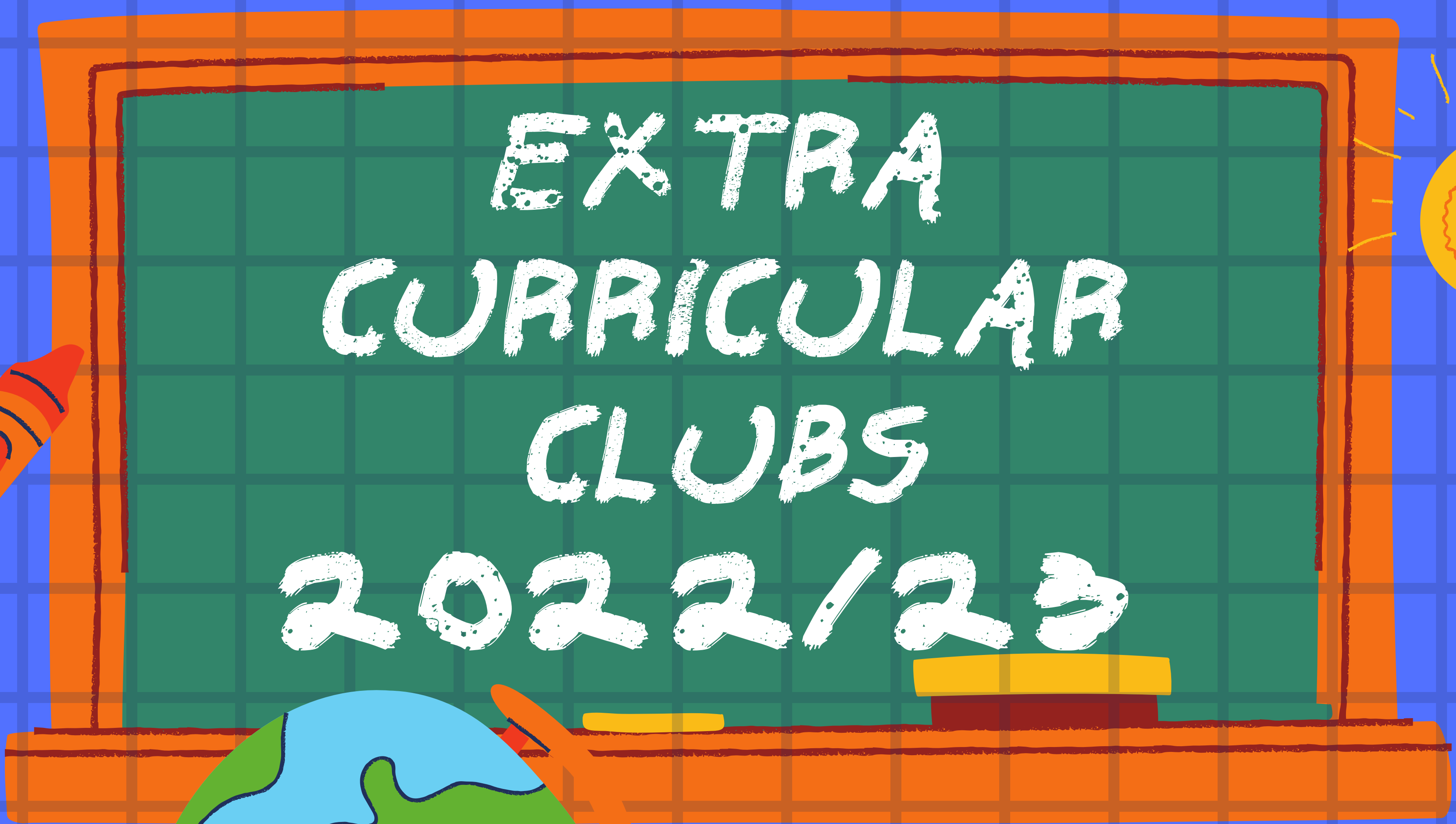
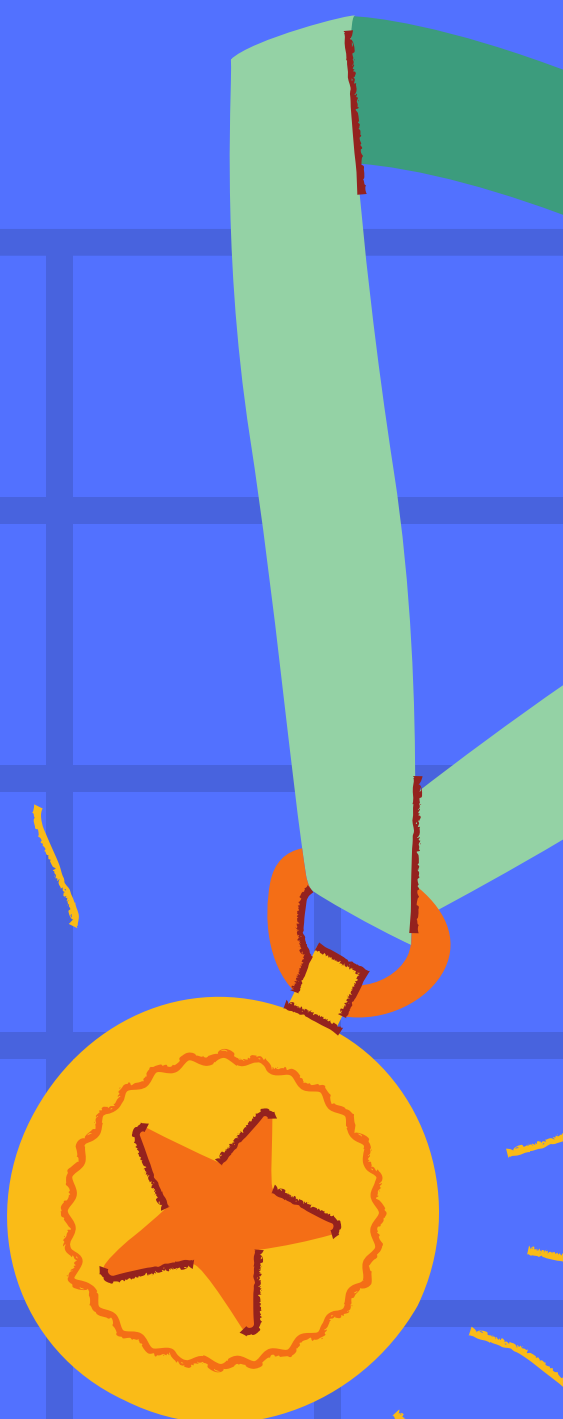


# Firrhill High School



EXTRA  
CURRICULAR  
CLUBS  
2022/23



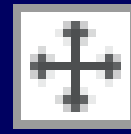
# Travel the Globe!



Learn about different countries around the world, including their festivals, traditions, food, music and much more!!

Monday Lunch Times - ML4

FOR MORE INFORMATION,  
SPEAK TO MISS O' SULLIVAN



# MVD Club



• Monday •  
Lunchtimes

• Sci 4 •  
Miss Williams

The club aims to give pupils interested in careers in Medicine, Veterinary and Dentistry; the chance to gain insight into the universities, career pathways, subject support, CV guidance and more.



Promoting Equality across the school

# **Rights Respecting Schools Equalities pupil group : Monday lunchtimes PSE 2**

Help plan school events and discuss ideas about children's rights and equality/ diversity issues, including racism and discrimination. Everyone is welcome.



IT ALWAYS SEEMS  
**IMPOSSIBLE**  
UNTIL IT'S  
**DONE**



**The Return  
of the  
Rubik's Cube Club  
Maths 5  
Thursday Lunchtime**



# *Debating club*

**Thursday lunchtimes**  
**Soc 8**

The debating club is a place where you can involve yourself in debates on key issues or controversial topics that affect us directly or indirectly today. Everyone is welcome to come along.

***OPEN TO ALL YEAR GROUPS***

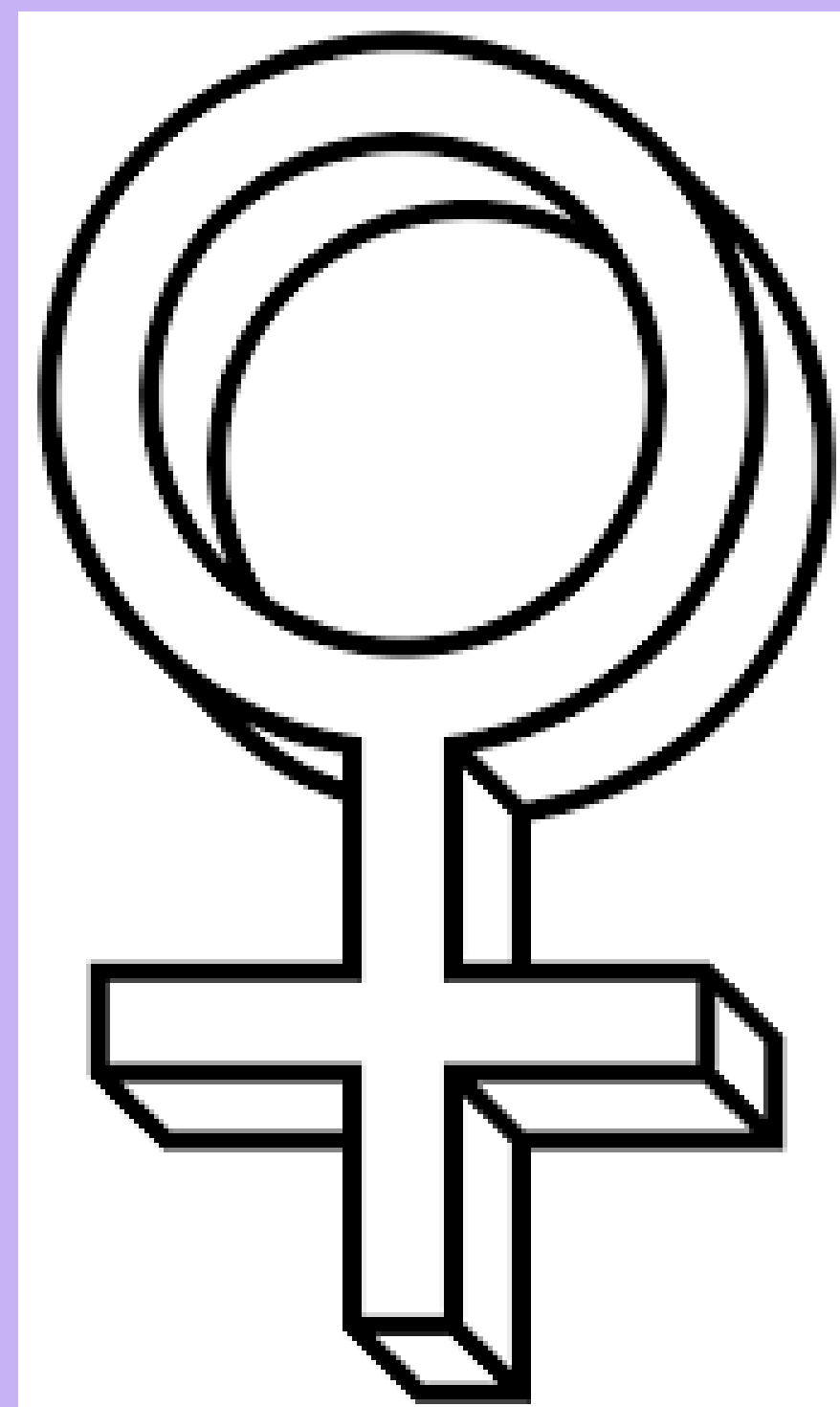
Come and grow your confidence in speaking!  
Further details from Ms Thomas

Interested in gender equality?

Come along to **The Feminist Society!**

Wednesday lunchtimes, Soc 10

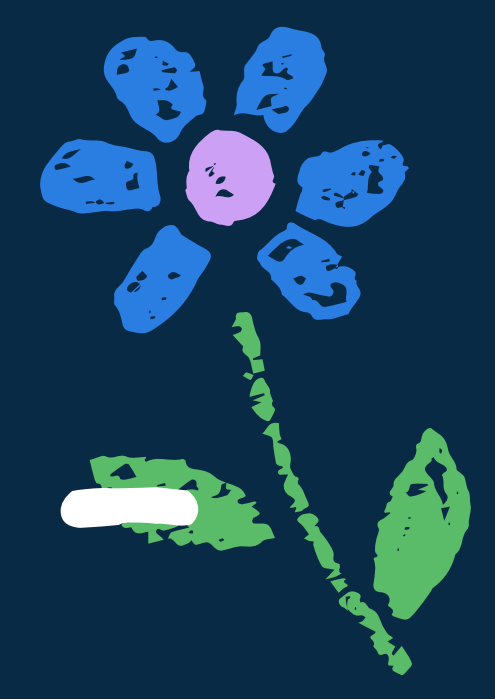
Open to all S3-S6 pupils





# S4-S6 Senior Drama Club

Mondays 3.35pm -  
5pm



# S1-S3 Drama Club

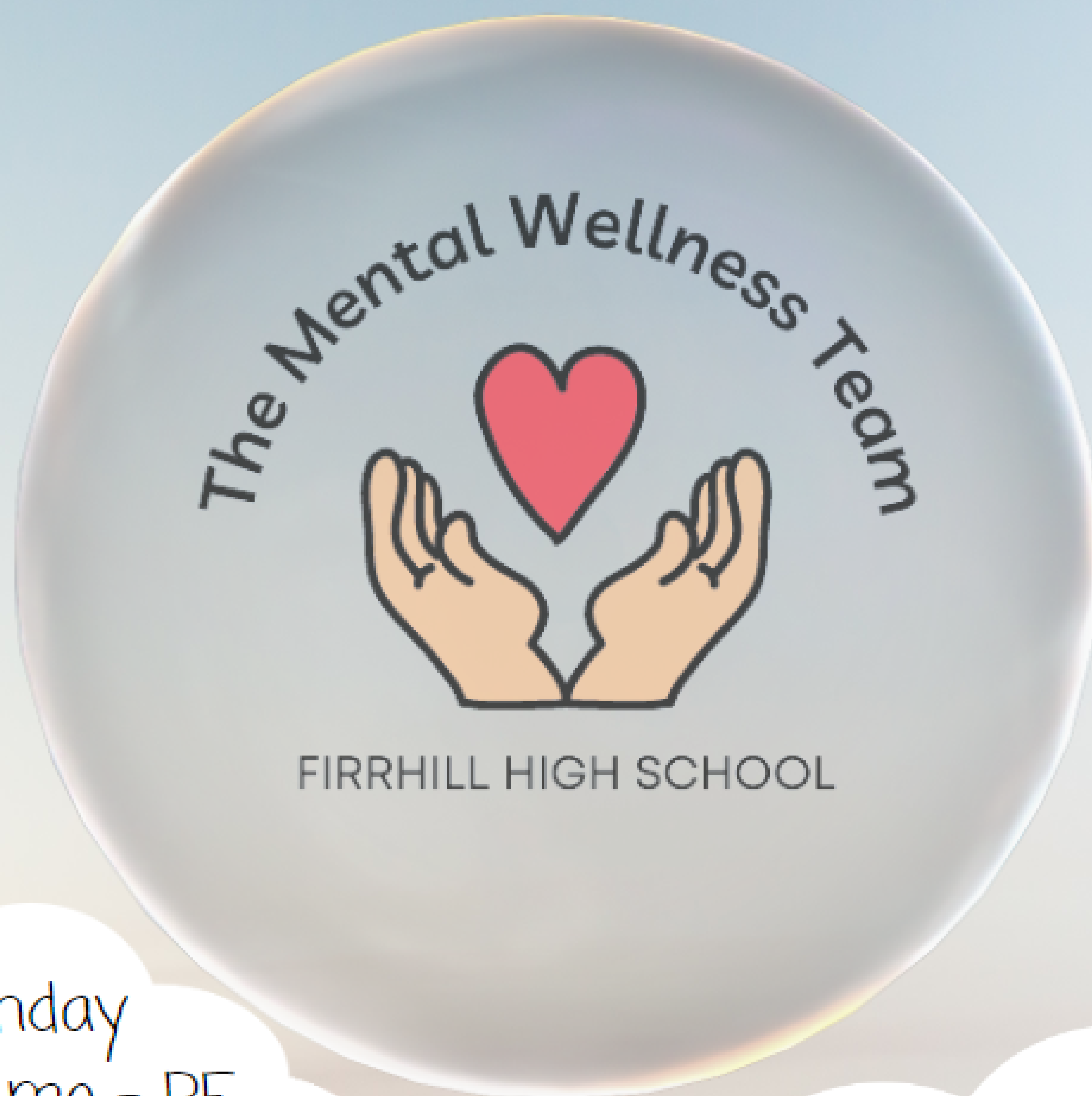
Thursdays 3.35pm -  
5pm





# THE BUBBLE

WHAT'S ON YOUR MIND?



Monday  
Lunchtime - PE  
Classroom

Run by pupils from the  
Firrhill Mental  
Wellness Team

Activities to  
promote positive  
Mental health &  
Wellbeing

@FIRRHILLMWT



# PE clubs

## MONDAY

S1 Fitness 12.25 - 1pm with Mr Polwart in the Fitness room

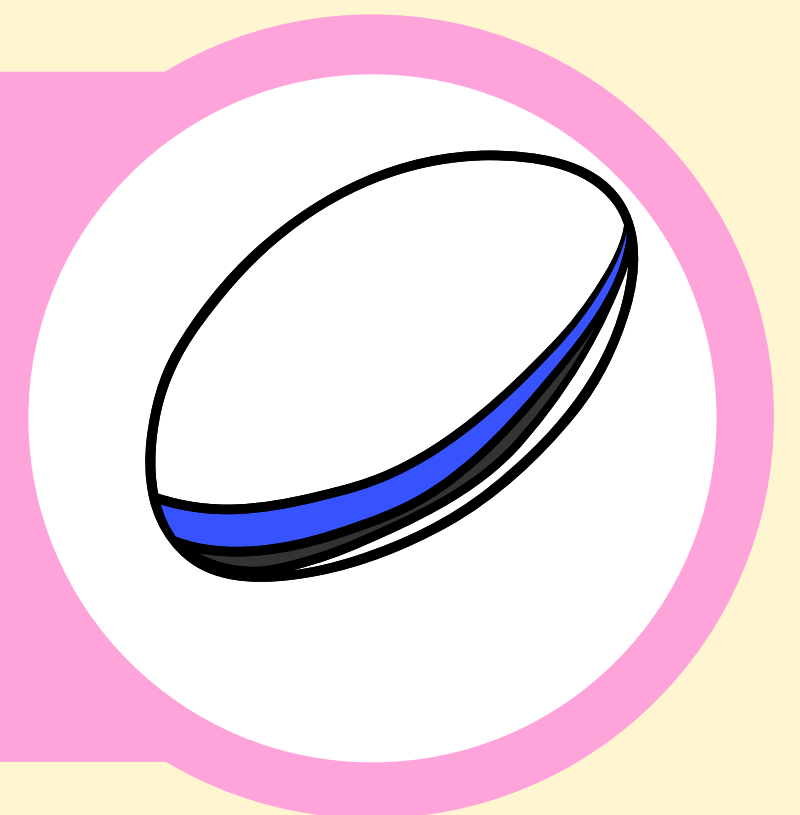


## MONDAY

S4 - S6 Yoga with Miss Graham in the Dance Studio

## MONDAY

S1 - S3 Rugby 4-5pm Boroughmuir Rugby Oxfangs field



## MONDAY

S3 hockey on Astro 4.30pm - 6pm run by Parents



# PE clubs

## MONDAYS

Badminton 3.45 - 4.45pm Games Hall Mr Leitch  
S3 Hockey 4.30pm - 6pm Parents Oxgangs Astro



## S1 - 3 TUESDAYS

S1-S3 basketball Games Hall 3.45pm - 4.45pm  
Mr Walkinshaw

## MONDAY

Cheerleading/Tumbling Club Gym Hall :  
Mondays 3.45pm - 4.45pm

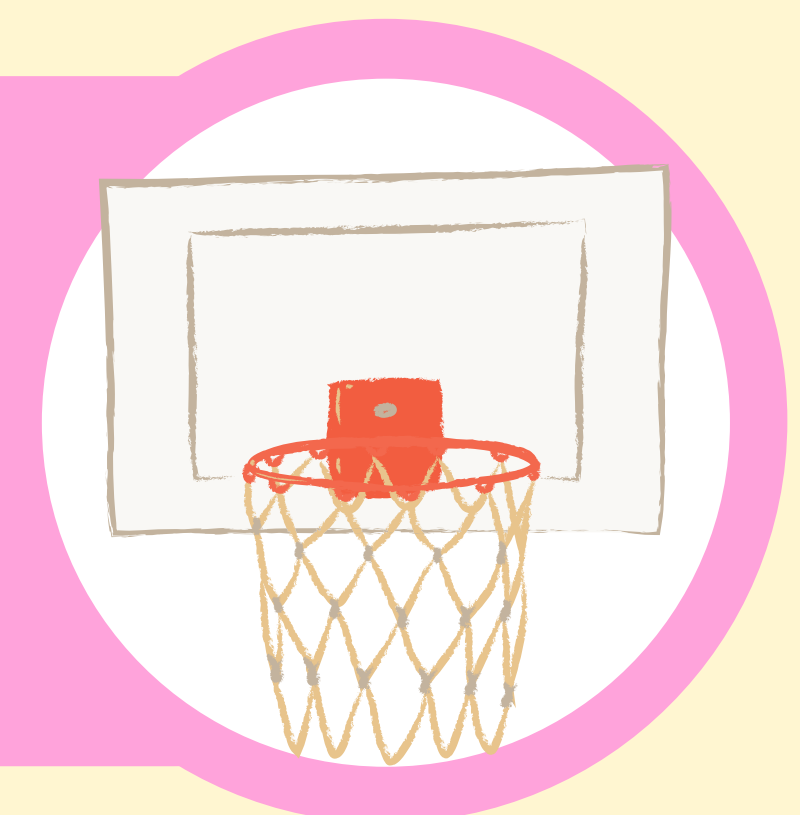


## HOCKEY : TUESDAYS

Senior Hockey 4.30pm - 6pm Parents Oxgangs  
Astro

## WEDNESDAYS S4 - 6

Senior basketball Mr Monaghan in the Games  
hall 3.45-4.45pm



## GIRLS FOOTBALL WEDNESDAYS

Girls football 3.45pm - 4.45pm Astro Ms  
Carmichael

# PE clubs

## WEDNESDAYS TENNIS

Tennis 4pm - 5pm organised by Active schools in Thistle tennis club



## THURSDAY FOOTBALL

Recreational football with Mr Rahimian  
3.45 - 4.45

## THURSDAYS S1 - 3

Netball 3.45pm - 5.30pm Games Hall Miss Neilson



## S1 AND S2 THURSDAYS

Hockey 4.30pm - 6pm Parents Oxfangs Astro

## S5/6 SENIOR FOOTBALL TEAM :

### FRIDAYS



Football on the Astro 1.30-4.30pm Mr Rahimian



## NEW THIS YEAR ALSO.

**Athletics** 3.45 - 4.45 Tuesdays with Sed

Remally Astro and **S1-3 Cricket** 3.45 - 4.45pm  
with Miss Gray-Renfrew



# Maths Supported Study 2022/23

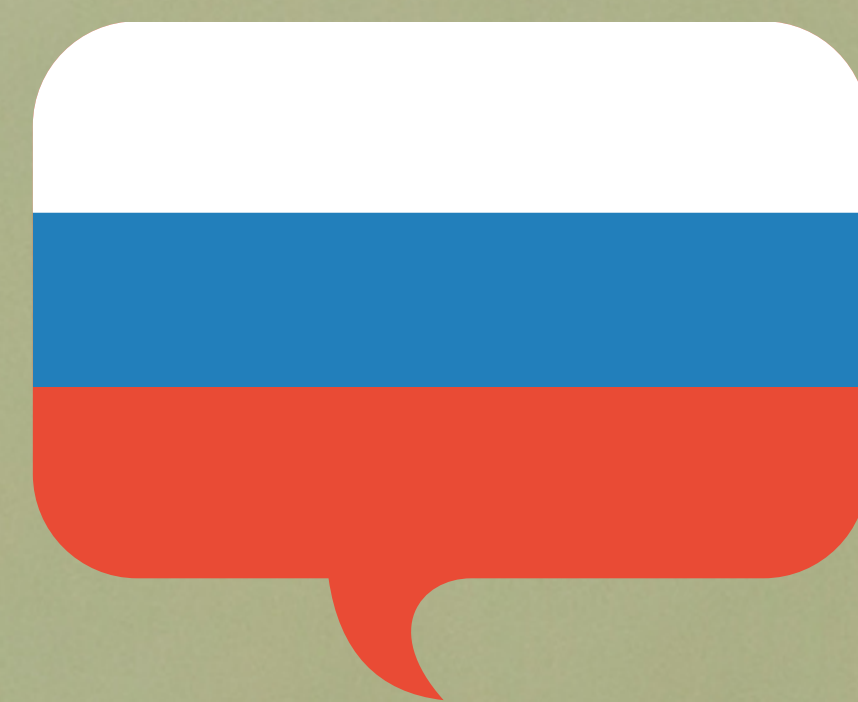
Day	Time	Teacher	Level	Room
Monday	Lunchtime	Mr Welford	All	Maths 3
	After School	Miss Watson	All	Maths 7
Tuesday	After School	Miss Harker/Miss Brookes	All	Maths 1
			N5 Maths	Maths 7
		Mr Knox		
		Ms Kupisz	All	Maths 4
		Mrs Sweeney	S1-3	Maths 8
Wednesday	After School	Mr Pitman/Miss Harker	Higher	Maths 1
		Mrs M <sup>c</sup> Vey	All	Maths 7
		Miss Baird	All	Maths 9
Thursday	Lunchtime	Mrs M <sup>c</sup> Vey	All	Maths 7
	After School	Ms Thomson	AH Maths	Maths 6

**Note:** If a teacher is not in their room then please check the Maths base. All Maths teachers have a meeting at Tuesday Lunchtime so are unavailable to offer Supported Study then.

# Multi-Culture & Languages Club

For pupils from diverse backgrounds  
who want to socialise and share their  
culture

Wednesday Lunchtimes SOC3



# SU Group

**Wednesday Lunchtime  
Science Department  
Lab 5**

**If you have ever had  
questions about Jesus  
or God or the bible  
then this is the group  
for you.**

**Or maybe you just want  
somewhere to be during  
lunchtime**

**Or you are a Christian  
and would like to meet  
other Christians in the  
school to learn and en-  
courage each other.**

**The SU group is open  
to everyone**



**SU Scotland**

**Bible**

**Chat**

**Friends**

**Food (sometimes)**

**Fun**

**Relaxed**



Firrhill High School

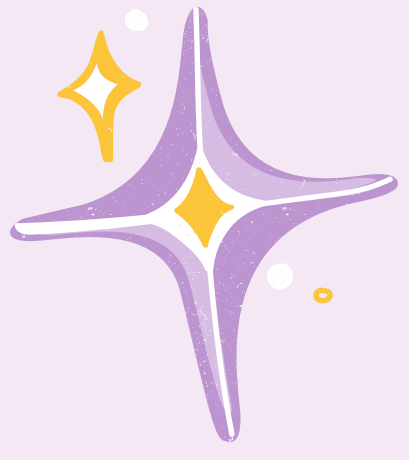
# GSEA Club

A space for LGBT+ pupils  
and allies to socialise and  
share their experiences.

**TUESDAY  
THURSDAY  
LUNCH TIME  
SOC3**



# Anti - racism pupil group



**Meet once a term wth  
Ms Kupisz in MA4**

**BE THE CHANGE**

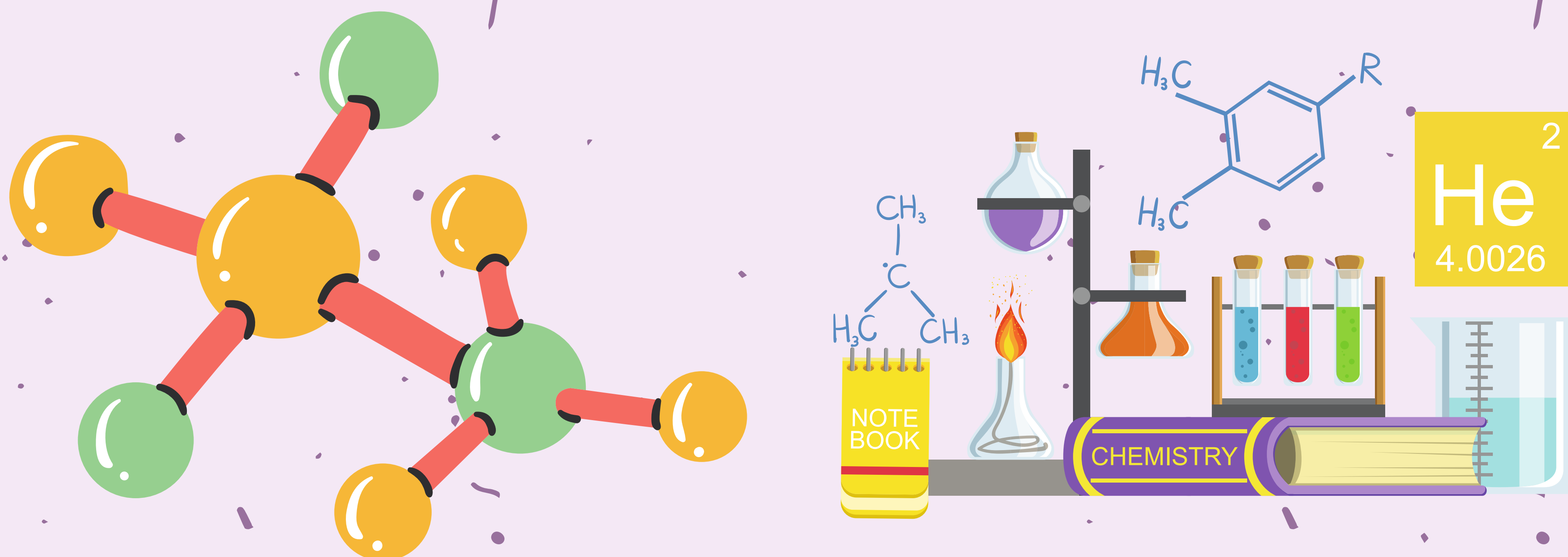


# CHEMISTRY SUPPORTED STUDY

FOR ALL NAT 5 AND  
HIGHER CHEMISTRY  
PUPILS

The aim of this study club is to support pupils with their Chemistry course by offering a drop in session so pupils can get help with areas they need or want to focus on in particular.

Thursday Lunchtimes with  
Miss Foote and Dr Easson  
in Science 9

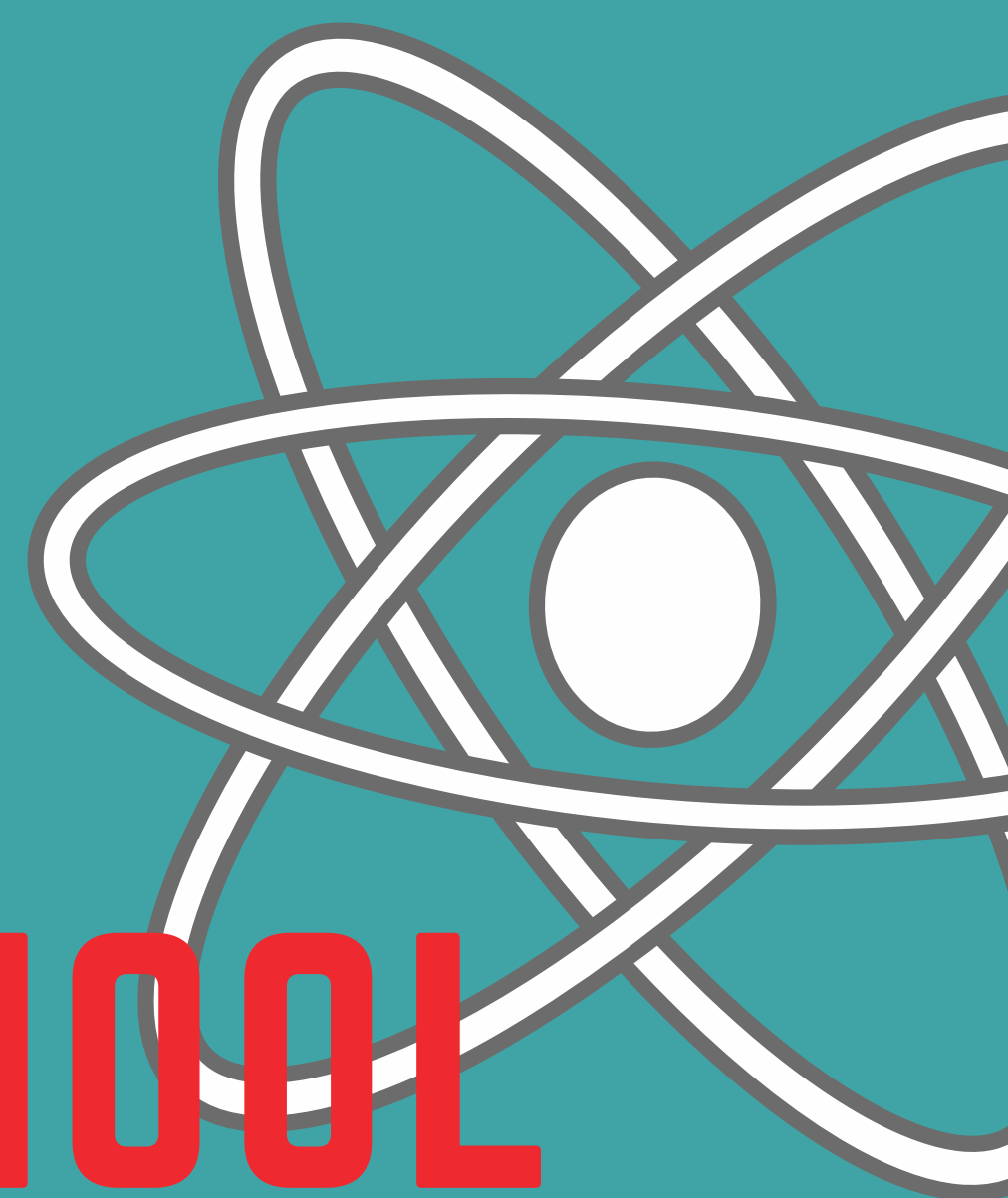


For all pupils studying Physics or Engineering

# Physics and Engineering supported study club

In the Science department

**THURSDAYS AFTER SCHOOL**  
**3.45PM - 4.30PM**



# OTHER DEPARTMENTS SUPPORTED STUDY SESSIONS

A number of departments will be starting supported study sessions in the run up to exams and assessments at various points during the year.

The exact times of these sessions will be posted on individual class Teams or given out by class teachers.



**Firrhill music  
groups**

**String Group - Mrs Corr -  
Monday lunch, MU3**

**Soul Band - Mr Courtney -  
Monday after school MU1**

**Guitar Group - Mr Knowles -  
Wednesday lunch MU2**

**Junior Band - Mrs  
McCormick - Wednesday  
after school Assembly Hall**

**Thursday guest band - Mr  
Courtney - Thursday lunch  
MU1**

**Big Band - Mr Courtney -  
Thursday after  
school Assembly Hall**

**Senior Band - Mr Hodge -  
Friday after school  
Assembly Hall**

Eco Committee  
Tuesdays 3.45pm  
Maths 3



REDUCE. REUSE.  
RECYCLE.

DO YOUR PART IN SAVING  
THE PLANET.

For more details please  
speak to Mr Welford

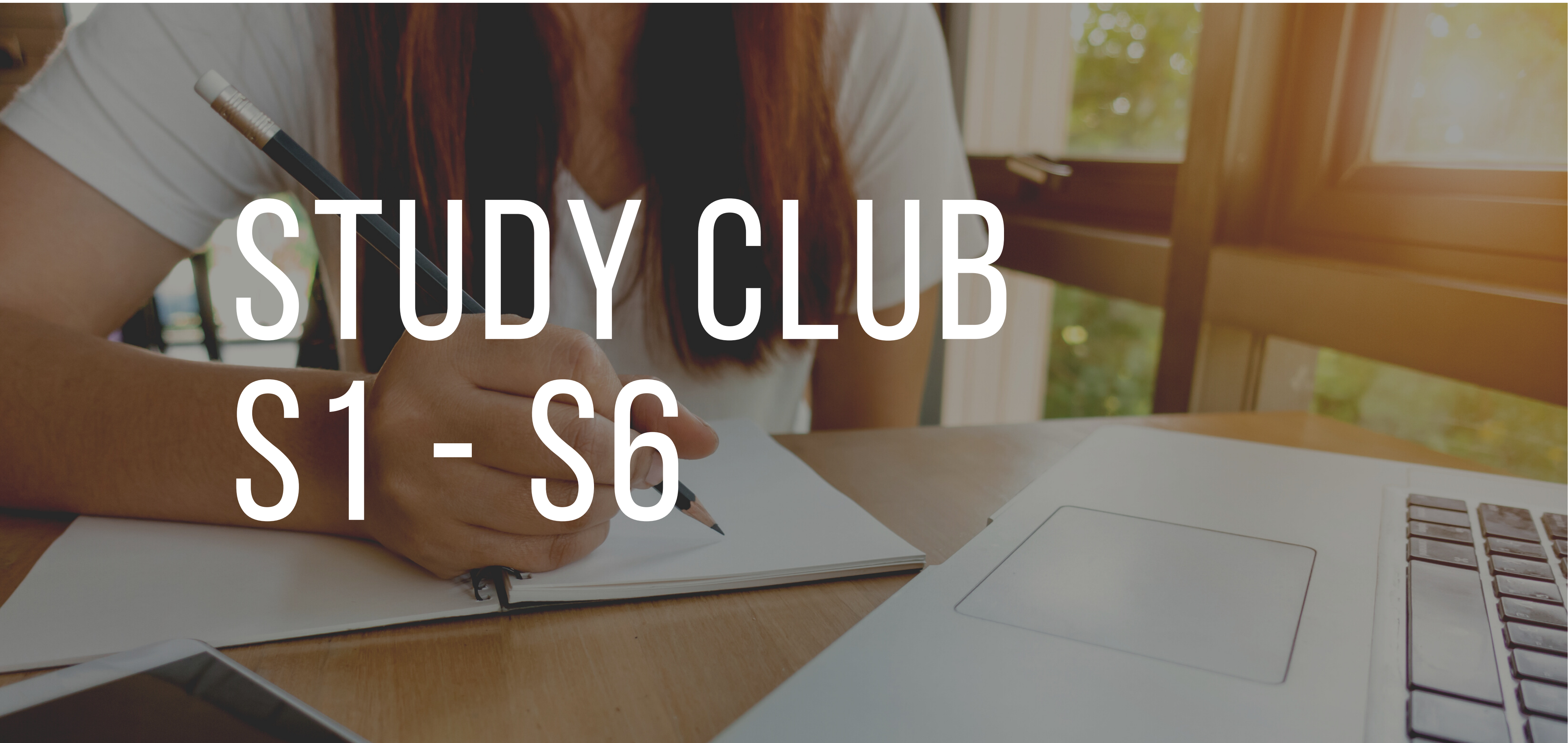
# Art Clubs

S1 and S2 Art Club at  
lunchtimes with Ms Noble  
on Mondays

Senior Study support by  
appointment with Class  
Teacher



Come and get help with your homework!

A photograph of a student with long brown hair, wearing a white t-shirt, sitting at a wooden desk. The student is holding a black pencil and writing in a white notebook. To the right of the notebook is a silver laptop. The background shows a window with a view of greenery outside. The text 'STUDY CLUB' and 'S1 - S6' is overlaid in white on the image.

# STUDY CLUB

## S1 - S6

**Every Monday and  
Tuesday in the  
School Library  
3.45 - 4.45pm**



# **Senior Student Council**

**Monday  
lunchtimes in the  
Library.**

Pupil Leadership @ Firrhill