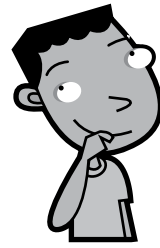


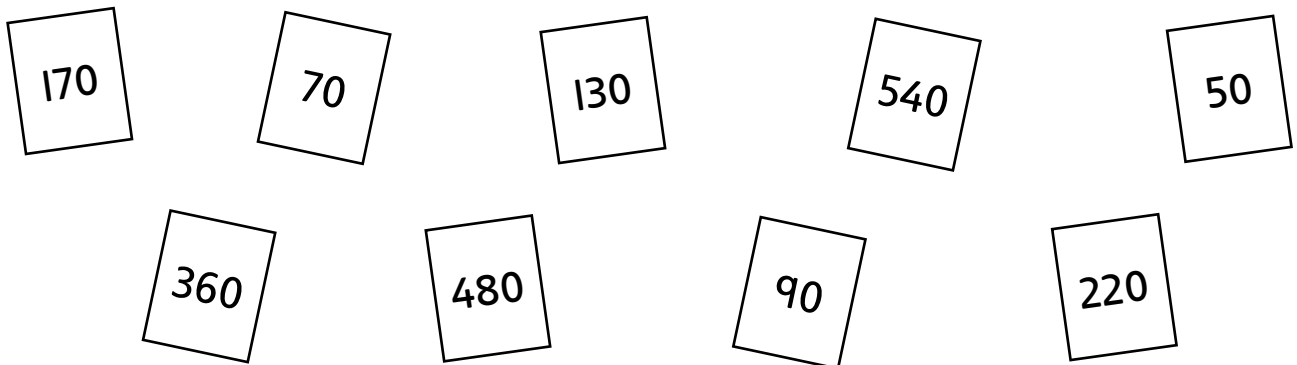
Adding and subtracting multiples of 10

Find the missing answers.



- | | | |
|----------------------------------|----------------------------------|----------------------------------|
| 1. $12 - 7 = \underline{\quad}$ | 2. $19 + 5 = \underline{\quad}$ | 3. $18 - 4 = \underline{\quad}$ |
| $120 - 70 = \underline{\quad}$ | $190 + 50 = \underline{\quad}$ | $180 - 40 = \underline{\quad}$ |
| 4. $27 + 3 = \underline{\quad}$ | 5. $13 - 6 = \underline{\quad}$ | 6. $23 + 9 = \underline{\quad}$ |
| $270 + 30 = \underline{\quad}$ | $130 - 60 = \underline{\quad}$ | $230 + 90 = \underline{\quad}$ |
| 7. $11 + 3 = \underline{\quad}$ | 8. $18 - 7 = \underline{\quad}$ | 9. $29 - 8 = \underline{\quad}$ |
| $110 + 30 = \underline{\quad}$ | $180 - 70 = \underline{\quad}$ | $290 - 80 = \underline{\quad}$ |
| 10. $15 - 6 = \underline{\quad}$ | 11. $21 - 7 = \underline{\quad}$ | 12. $33 - 8 = \underline{\quad}$ |
| $150 - 60 = \underline{\quad}$ | $210 - 70 = \underline{\quad}$ | $330 - 80 = \underline{\quad}$ |

13. Choose two cards. Find the total and the difference.
Do this six times.



I can recall my number bonds quickly and accurately and can use multiples of ten to create new facts

