

Conversions

1. Change these lengths to centimetres

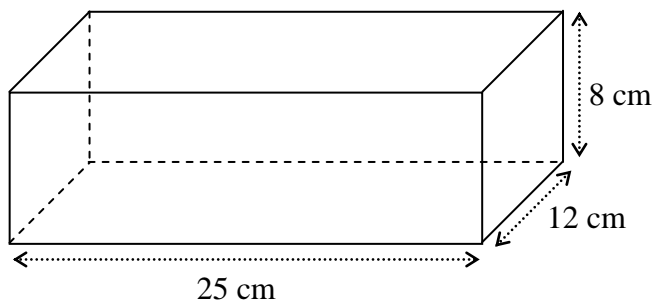
- (a) 50mm (b) 23mm (c) 3m (d) 5.6m [4]

2. Change these lengths to metres

- (a) 500cm (b) 456cm (c) 7km (d) 9.23km [4]

3. How many millilitres are there in $\frac{3}{4}$ litre? [1]

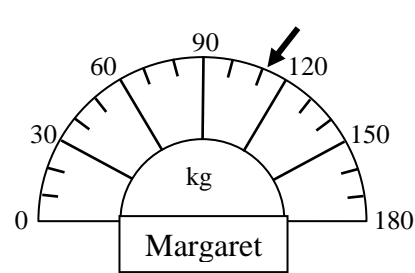
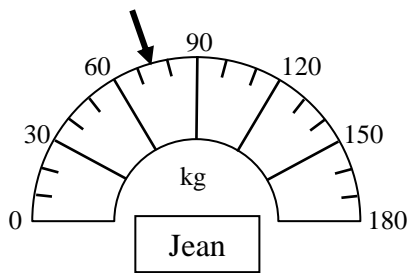
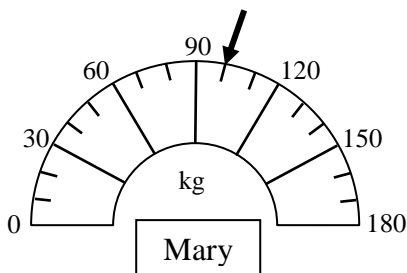
4. Ice cream comes packed as cuboids with dimensions as shown in the diagram.



A serving of ice cream is 0.3 litres.

How many servings can be made from the cube? [5]

5. Mary, Jean and Margaret joined a Slimming Club. Their weights at the beginning are shown on the scales:



(a) How much heavier than Jean was Margaret?

(b) What was the total weight of all three ladies? [2, 2]

[18 marks]